

***Dauphin Island Strategic
Planning Project***

Interim Planning Report

submitted by
Five E's Unlimited

April 20, 2007


 Protection of Natural Resources	Economic Sustainability	Consistent Enforcement of Laws	Affordable Quality & Quantity of Water	Consolidation of Government	Coastal Protection	Community Facilities
Environmental fee or toll onto Island	Encourage local businesses & support them	Enforce ordinances/laws (e.g., dogs, tree cutting, litter, drugs, driving)	Clean drinking water (preserving wetlands)	One government – no POA or Park & Beach Board	Preserve south shore (beach renourishment)	No youth care (day care) or structured youth activity
Maintain & conserve airport preserve	New businesses to the Island (restaurants)	Reduce speed limits	Cost & quality of water	Too many civic entities	Recovery of shoreline & low density development	Need an activity center
Conserving, replenishing, preserving natural assets	Incentives to promote attractive businesses	Increased traffic gridlock	Encourage Mobile water/sewer service to DI	Synergy among town, park & beach bd, POA, & water& sewer	Restoration of coast line (engineered beaches)	Keep community-use properties for community use in perpetuity
Conserve, preserve, replenish natural resources	Support for restaurants and other businesses	Enforce all zoning ordinances & traffic/parking	Drinking water quality	Consolidation of public entities	Clean & healthy beaches	No childcare on Island
Save the trees and wetlands	Alternative sources of Town revenue (other than condos)	Comprehensive tree ordinance	Enough water supply & sewage capacity for development	Join water, fire, POA into Town	Beach replenishment	No community center for Town
Preserve the east end dunes	Toll to Island	Greenways – wildlife corridors	Quality & quantity of water sources			
Preserve the seafood industry	Toll on the bridge	Tourism garbage impact on island				
Environmental impact fee	Can the Island pay for itself?	Too many drugs on Island				
Preserve habitat for birds & other wildlife	Income industries – fishing, tourism, residents, royalties	Trash pick-up				
Public dock for commercial shrimpers	Lack of restaurants	Develop ordinances that have forethought instead of just reaction				
Wetland protection	Lack of restaurants on Island					
Save all wetlands	Missing downtown & related services					
Control development for conservation of natural resources						



Figure 1

Stakeholder Distribution

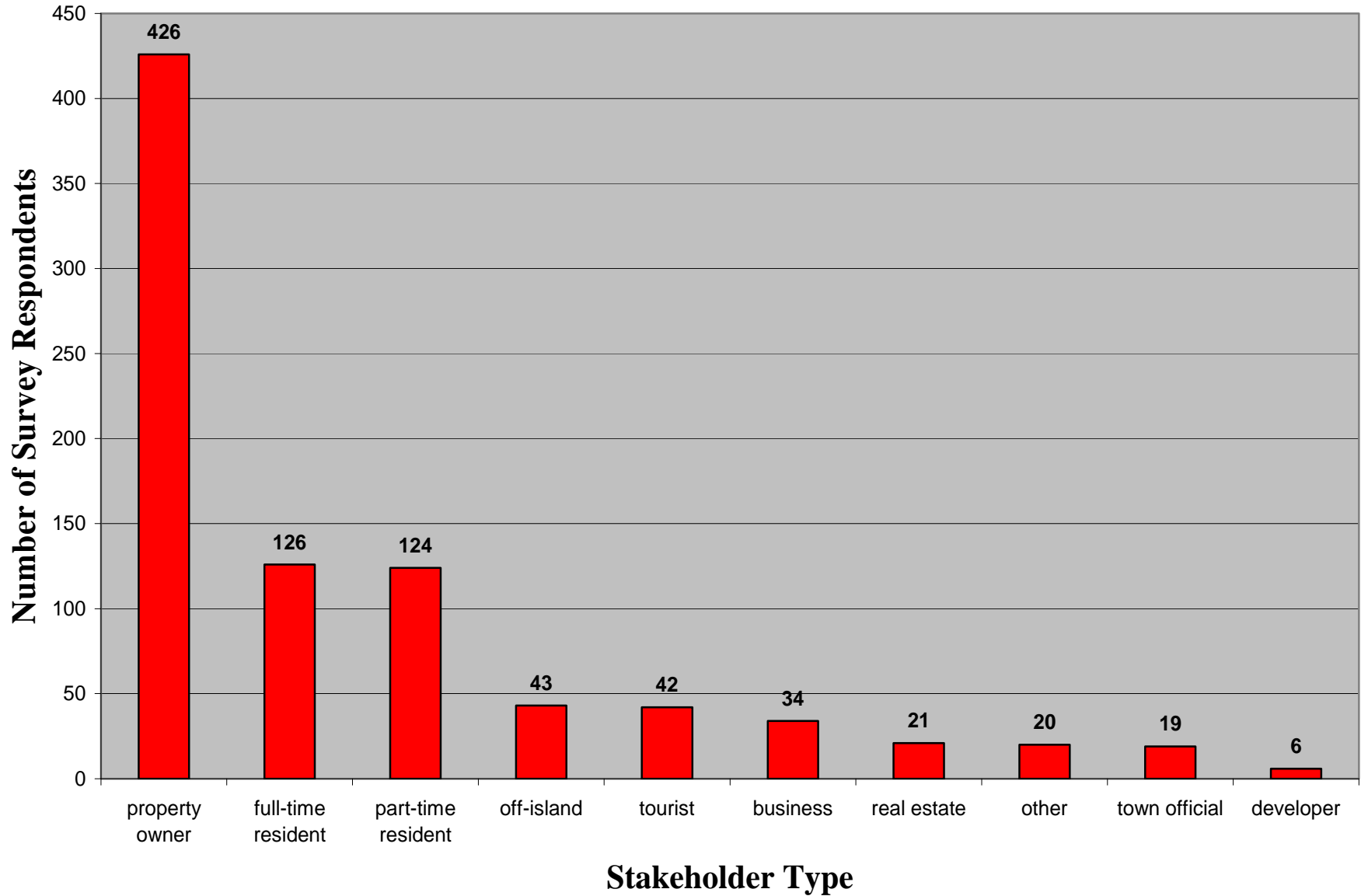




Figure 2

Survey Respondent Distribution

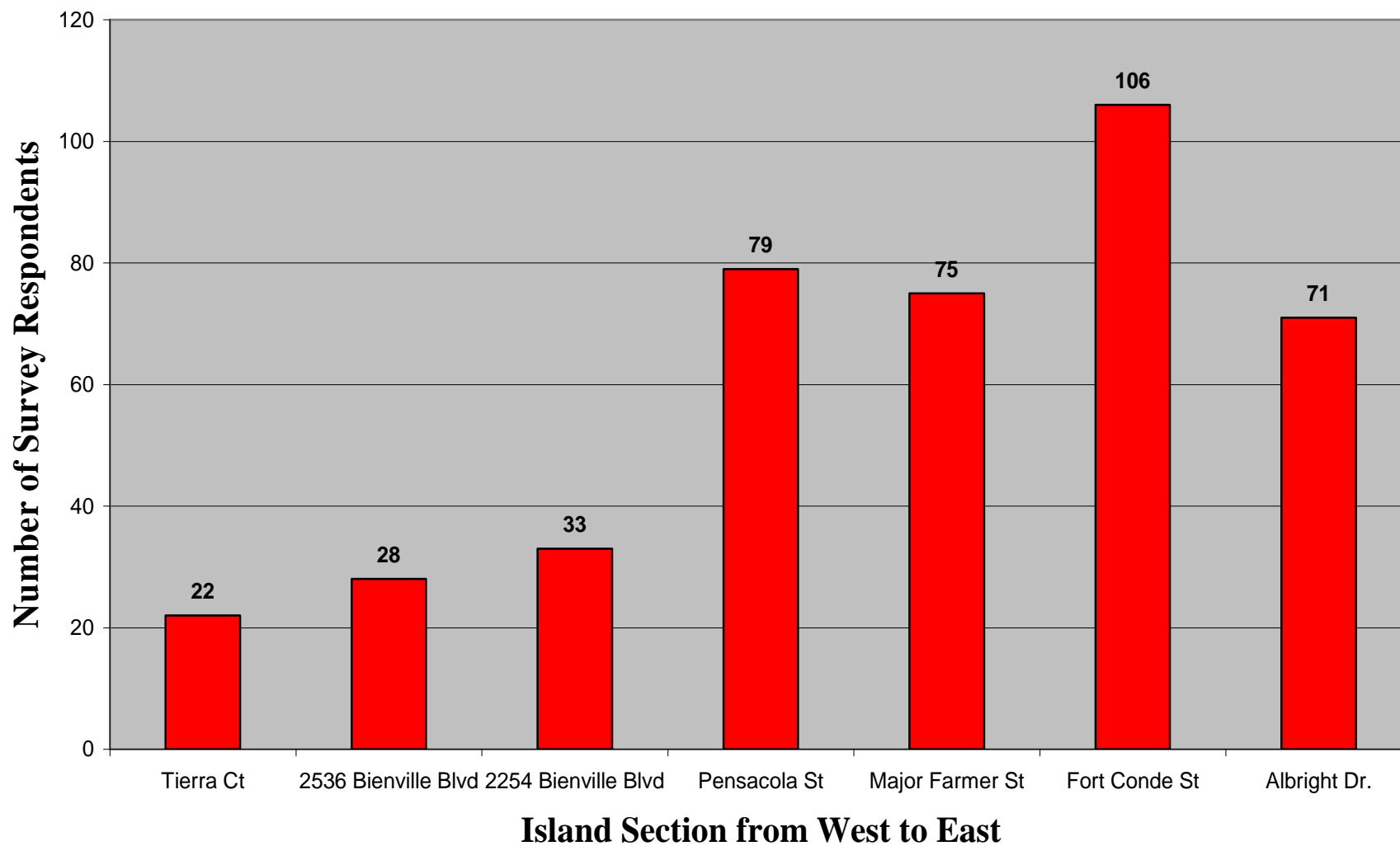




Figure 3

Comparison of Full & Part Time Resident Distributions

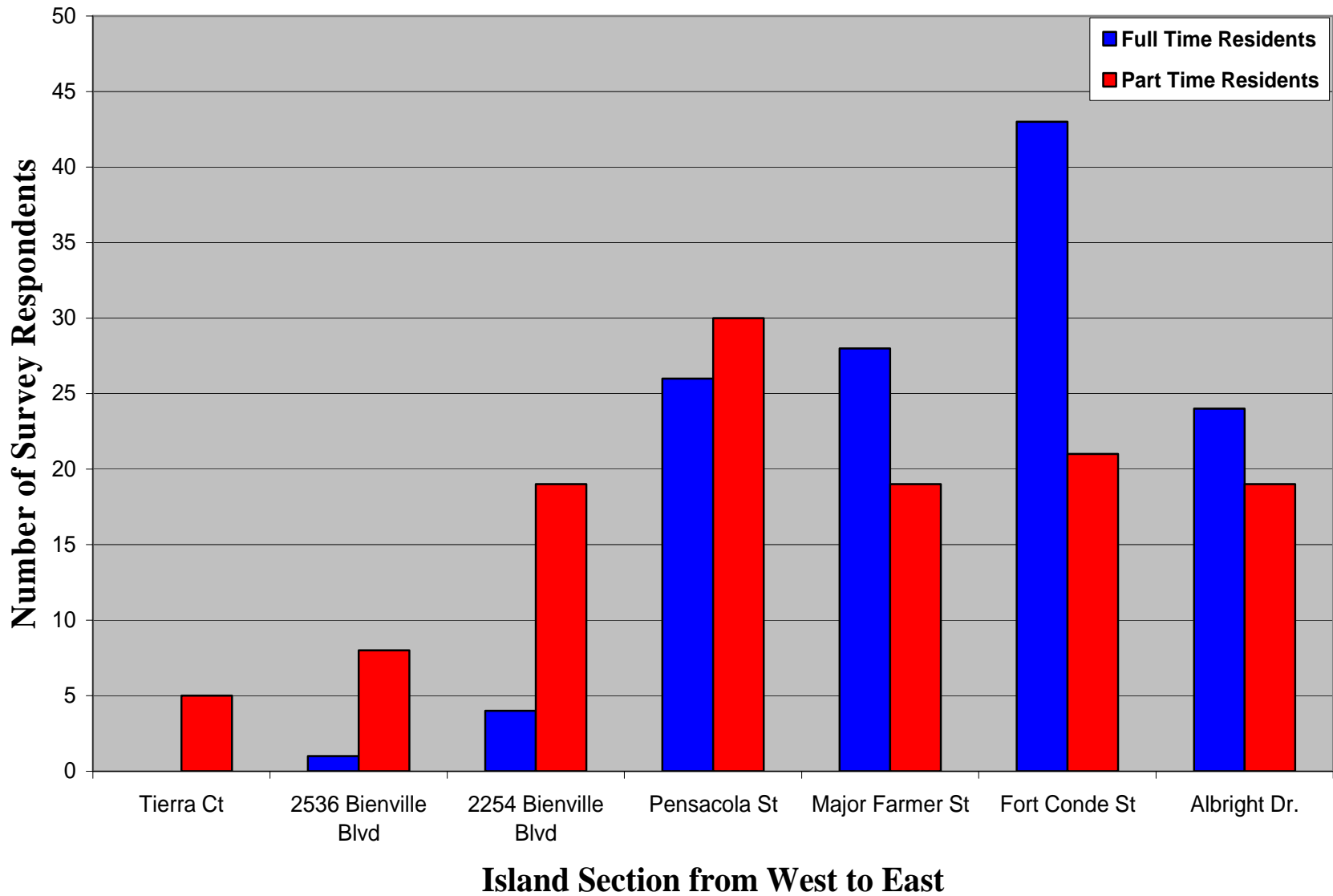




Figure 4

Resident Complaints

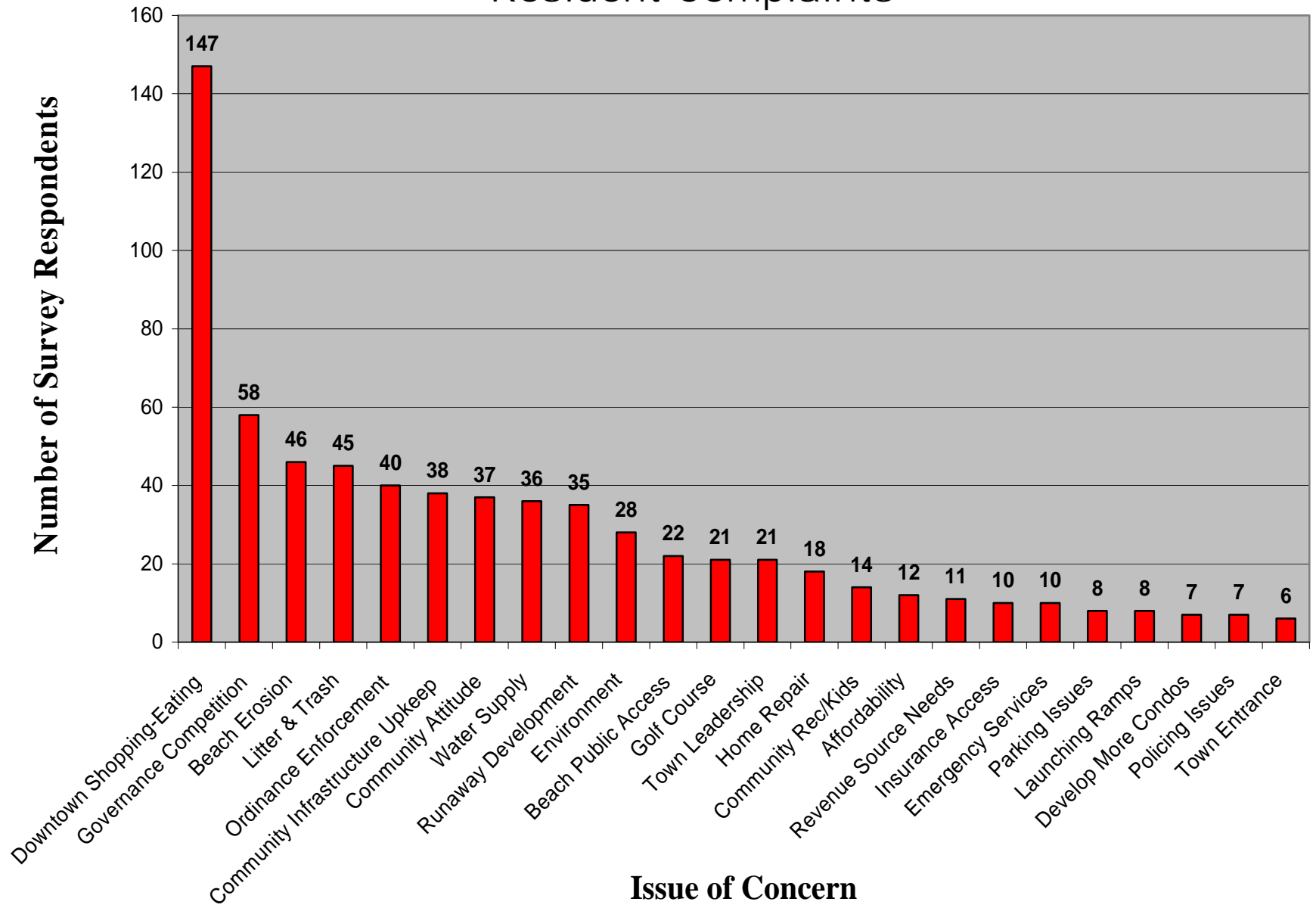


Figure 5

Ranking of Planning Issue Concerns

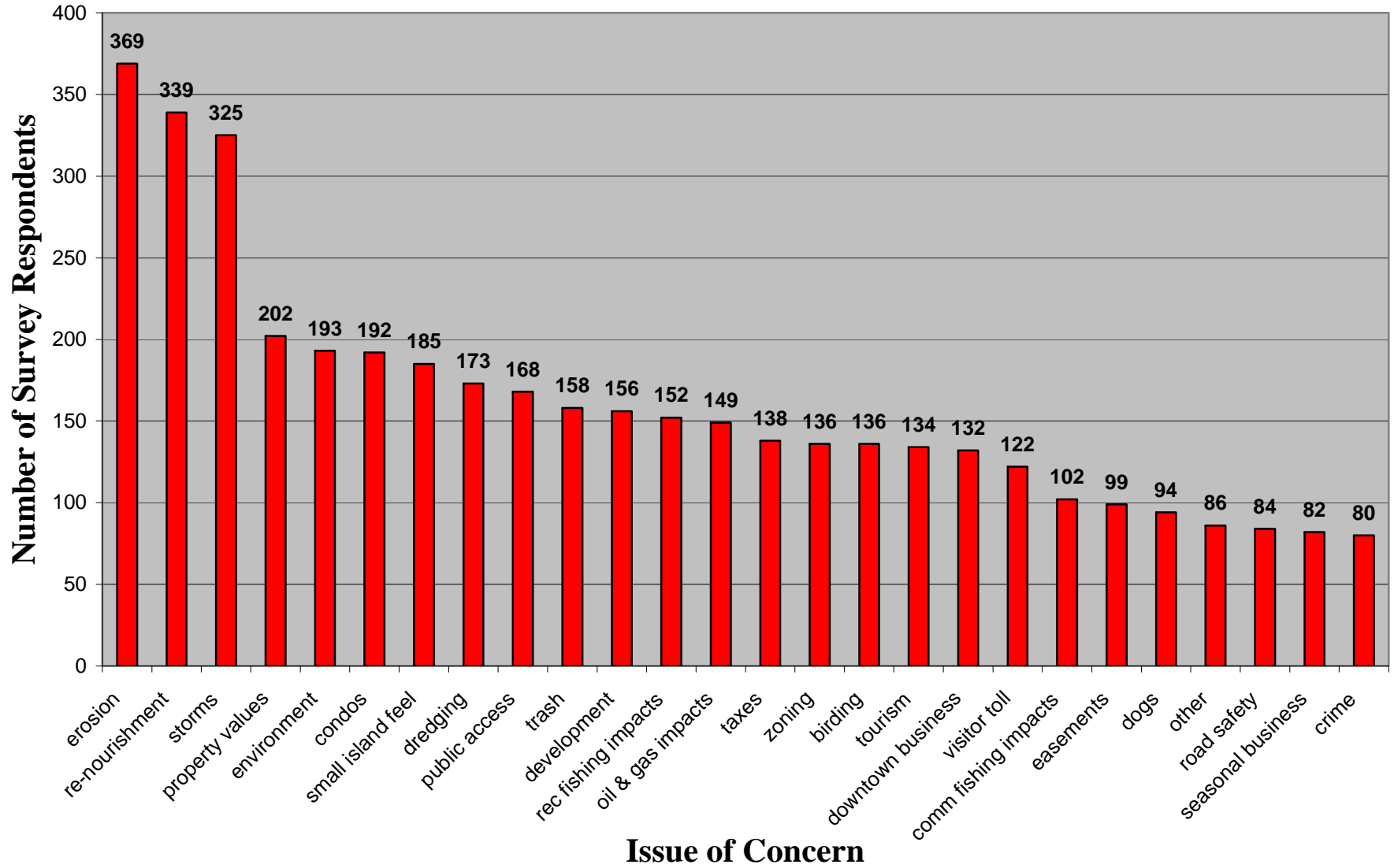


Figure 6

Key Issue Identification by Stakeholder Location on Island

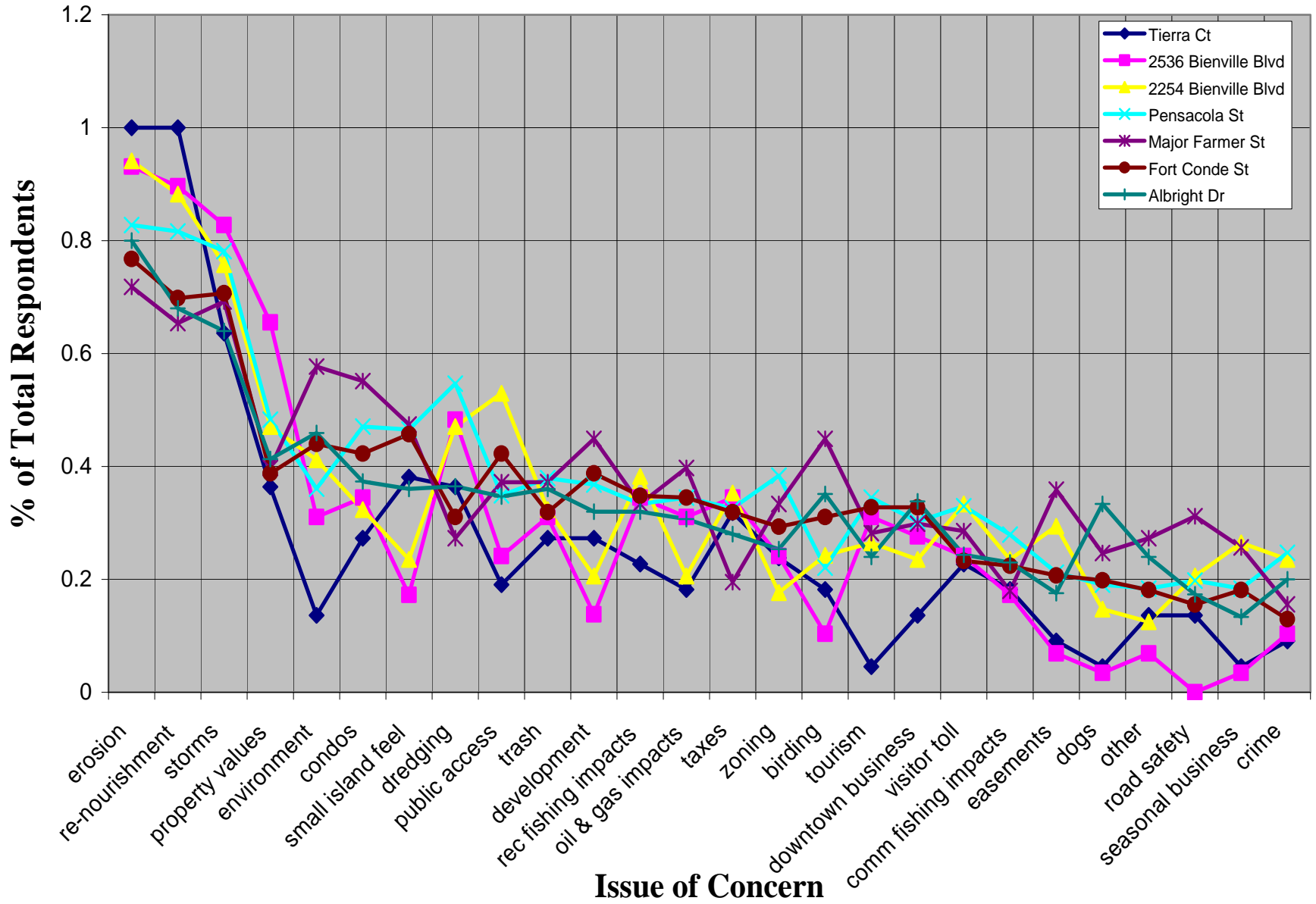




Figure 7

Full Time versus Part Time Resident Concerns

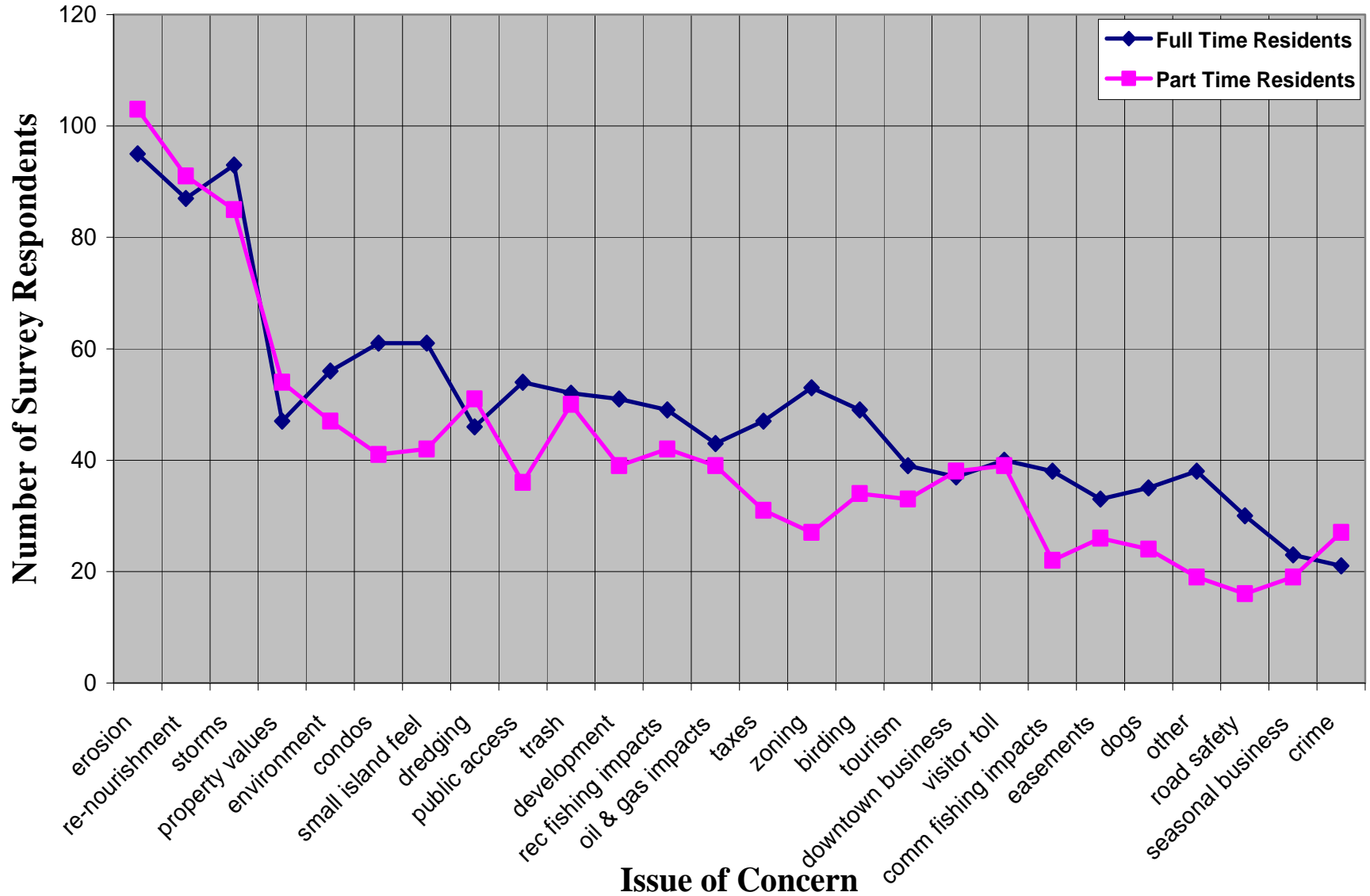




Figure 8

Planning Concern vs Home Location on Island

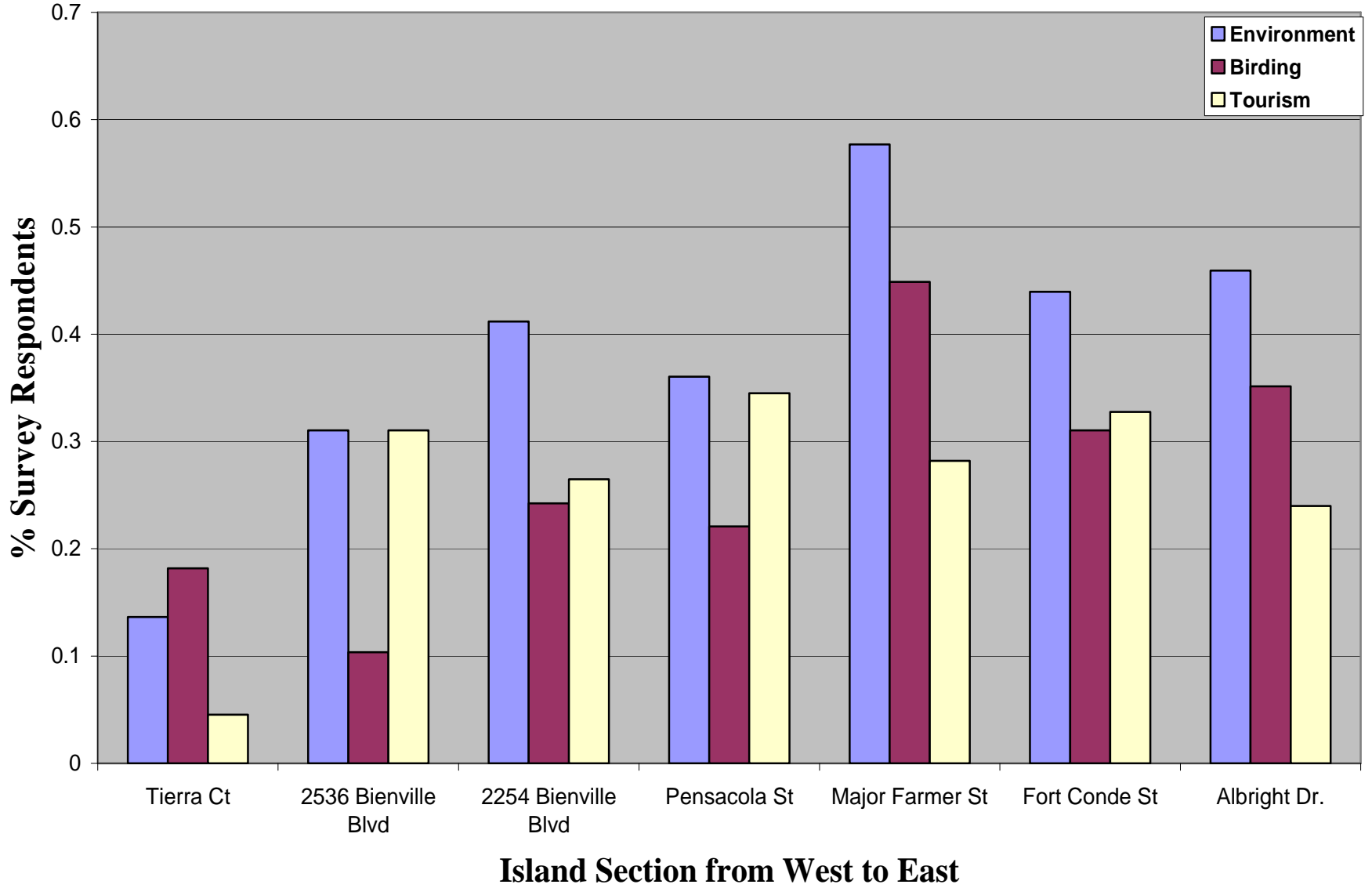


Figure 9

Planning Concern vs Home Location on Island

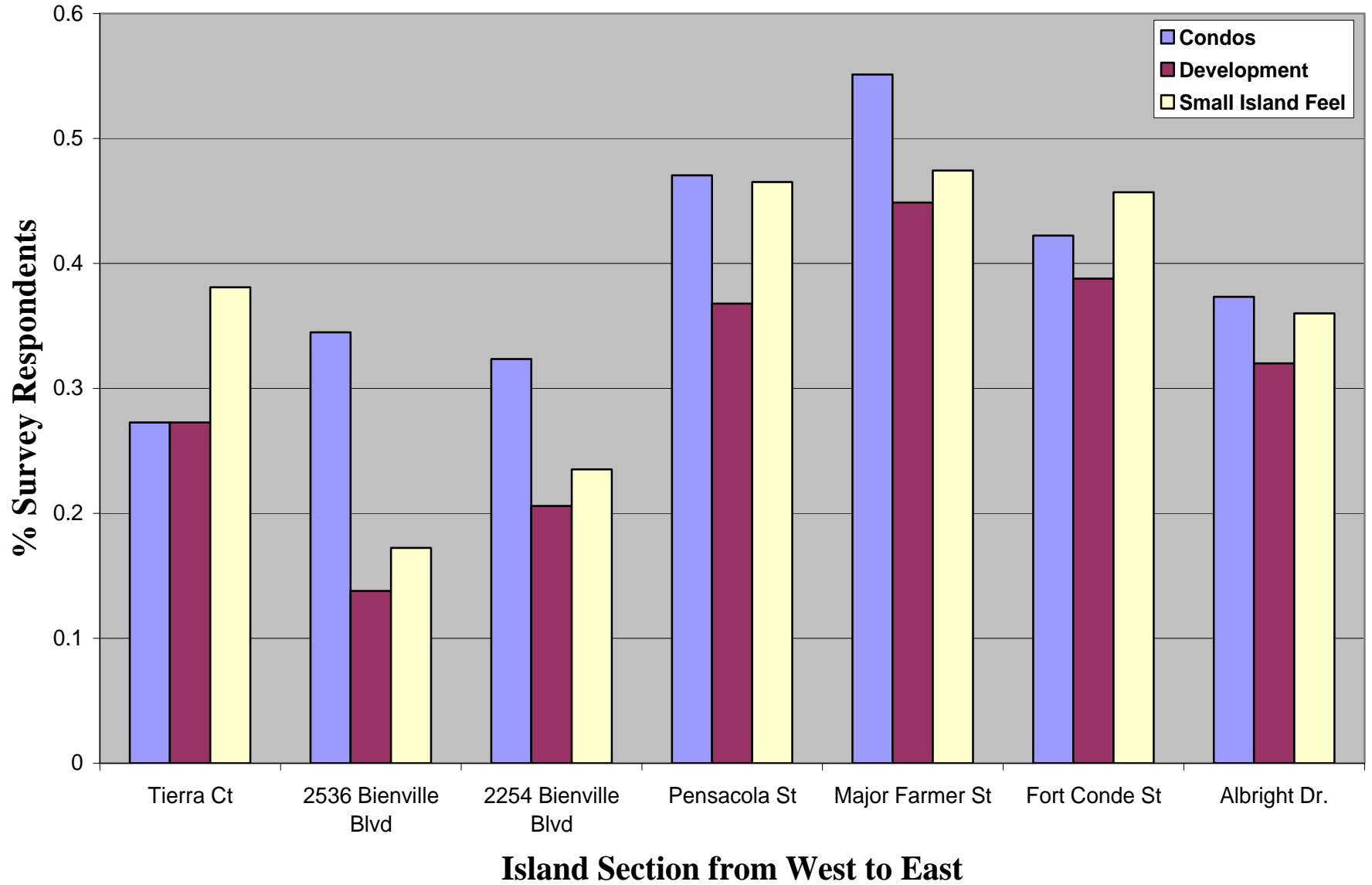




Figure 10

Planning Concern vs Home Location on Island

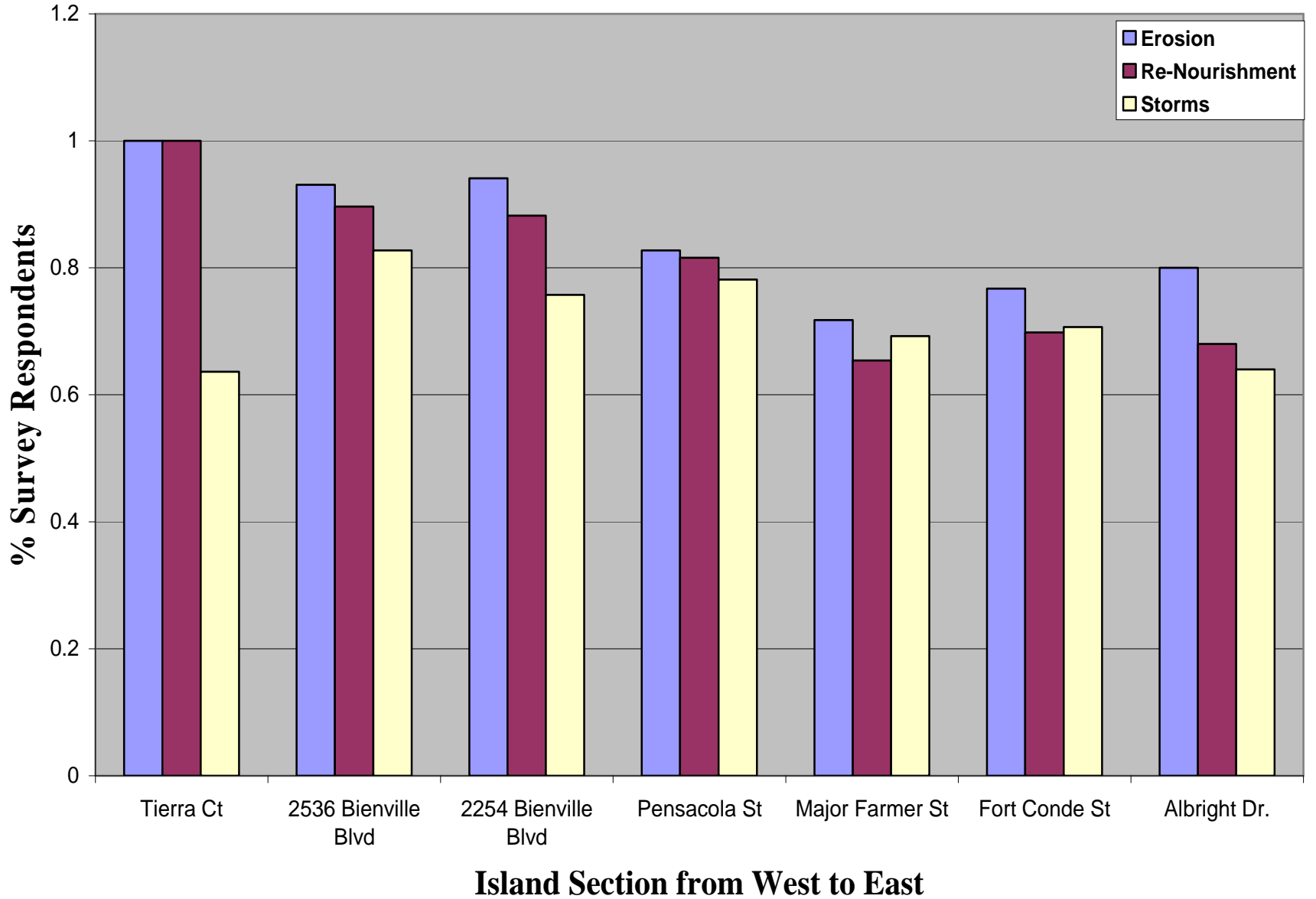


Figure 11

Planning Concern vs Home Location on Island

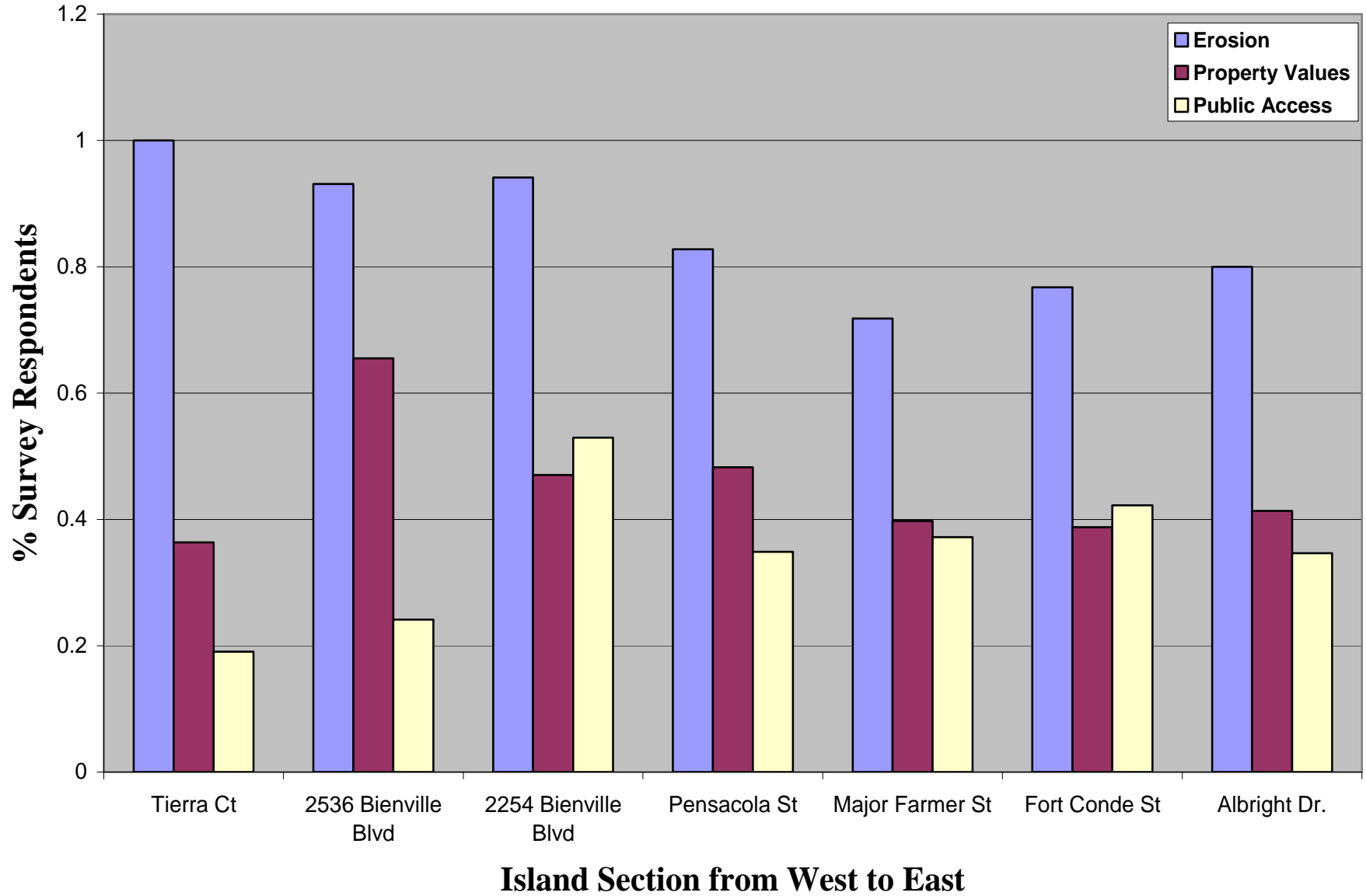




Figure 12

Planning Concern vs Home Location on Island

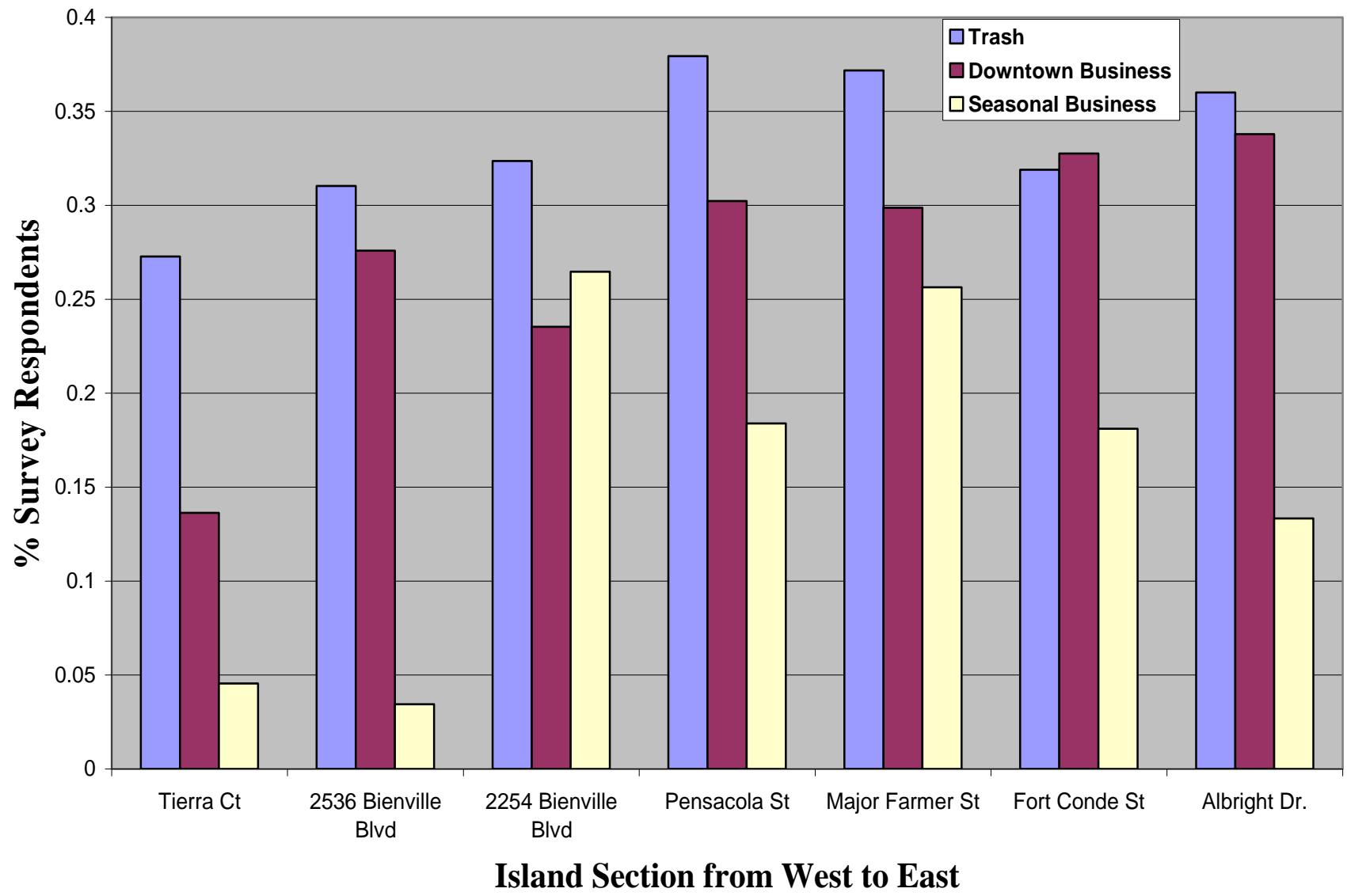




Figure 13

Planning Concern vs Home Location on Island

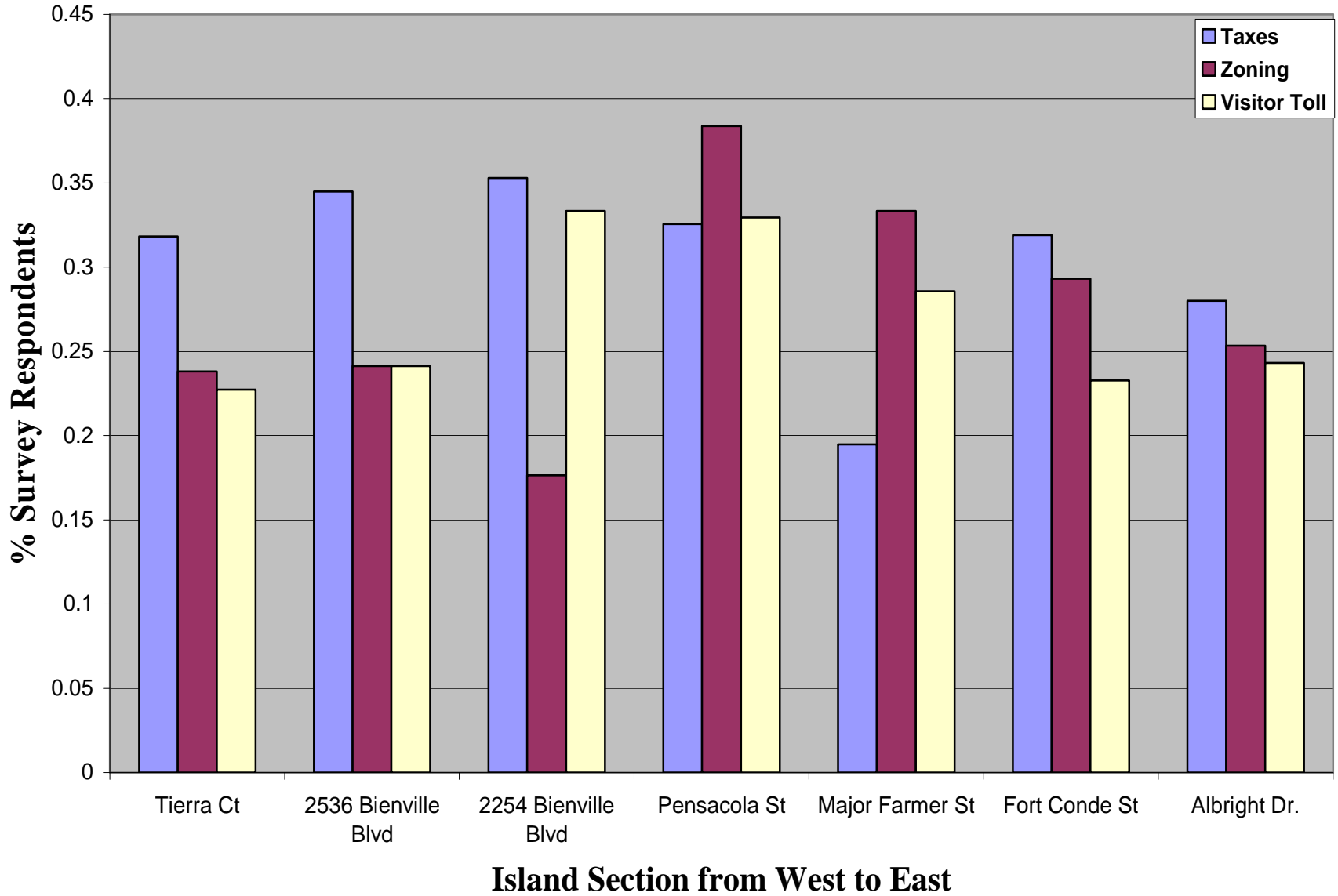
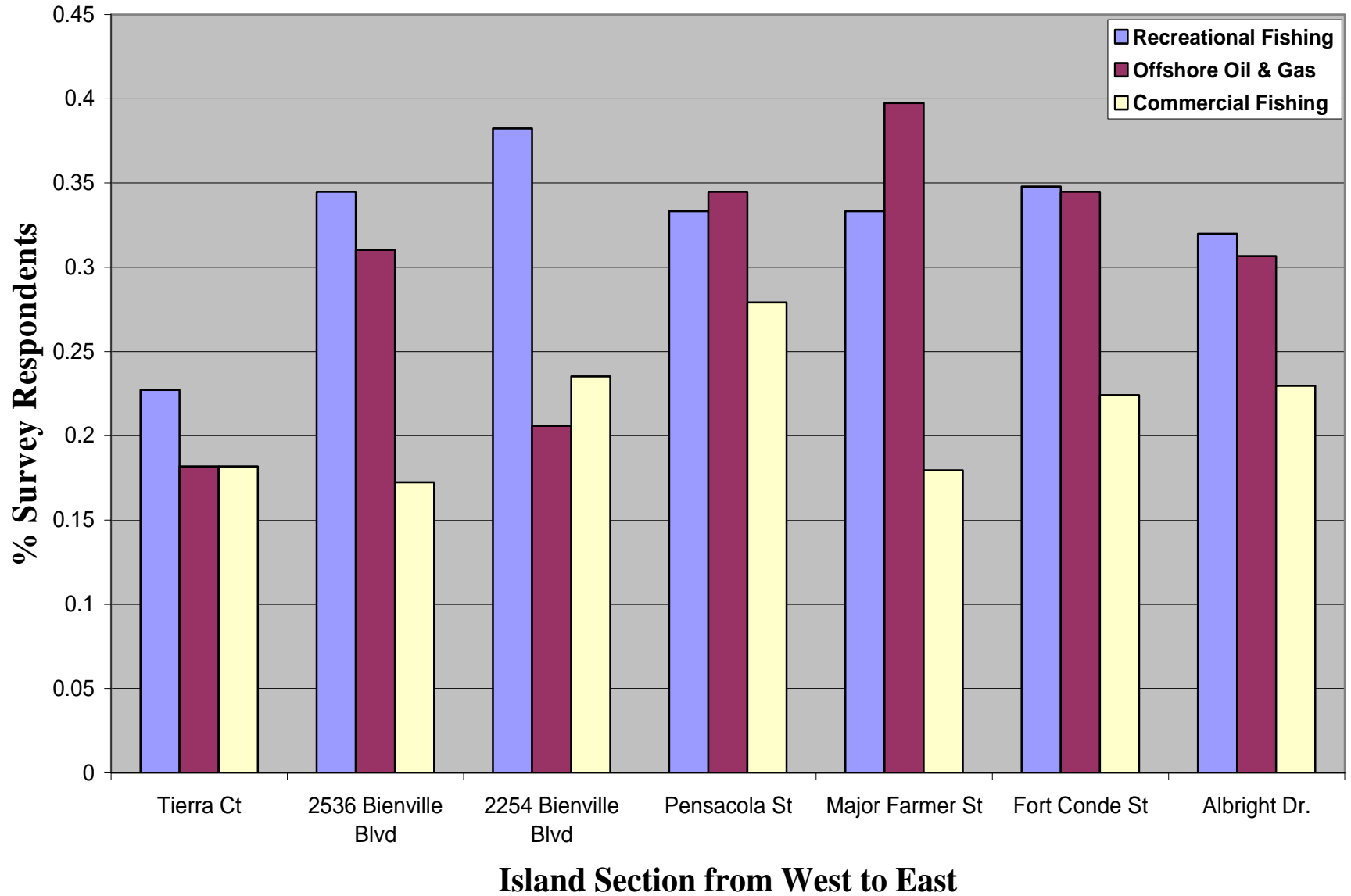
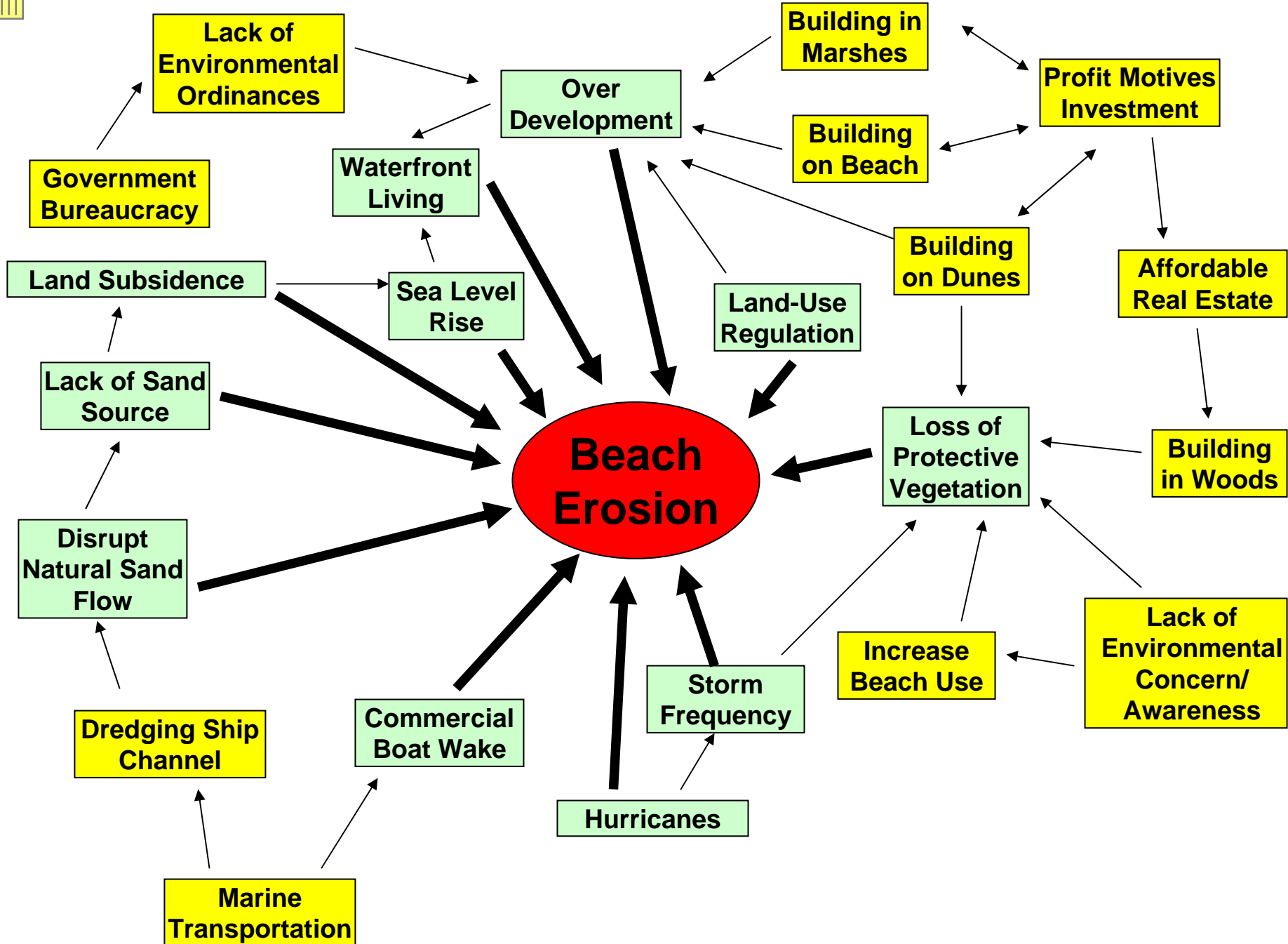


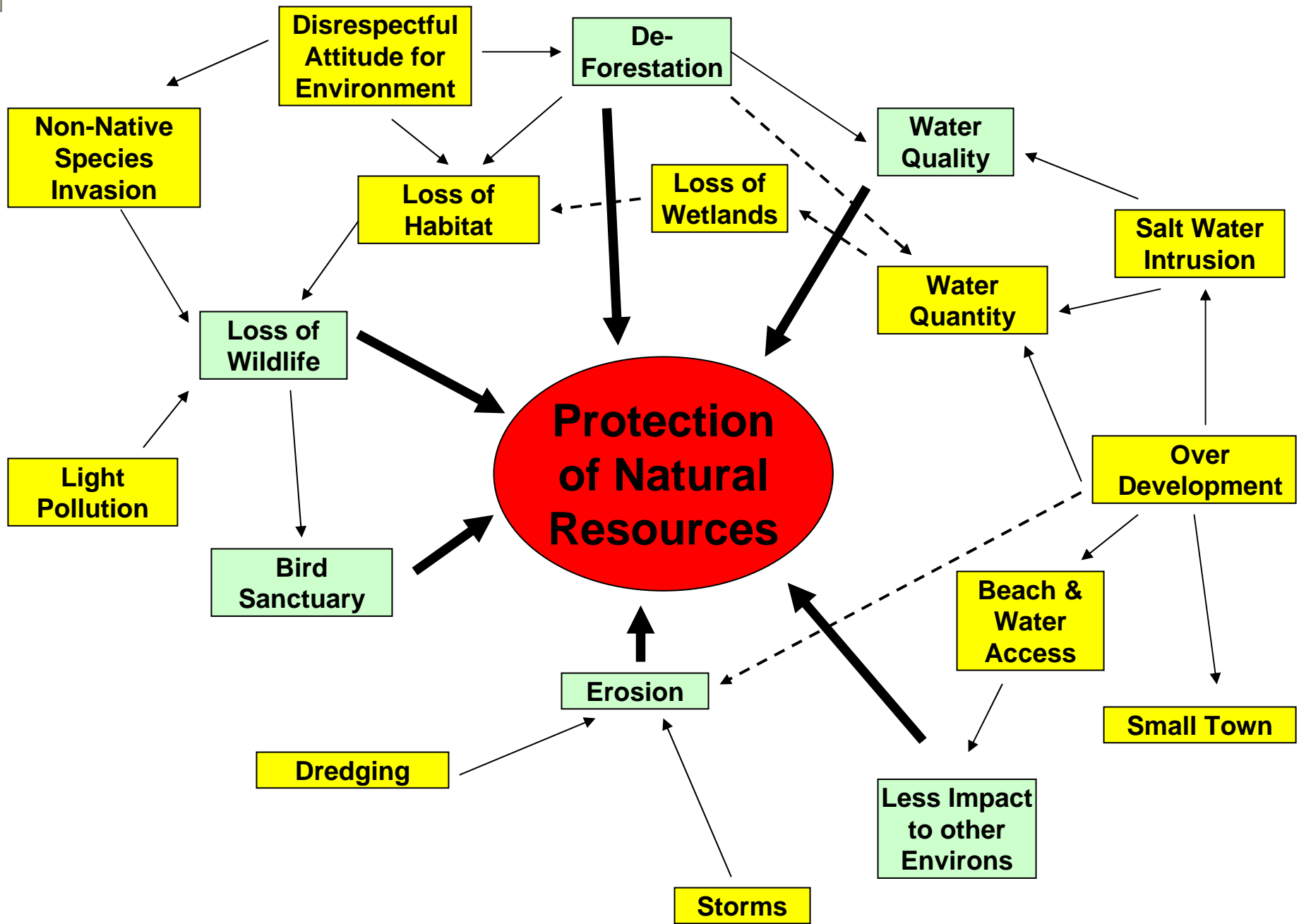


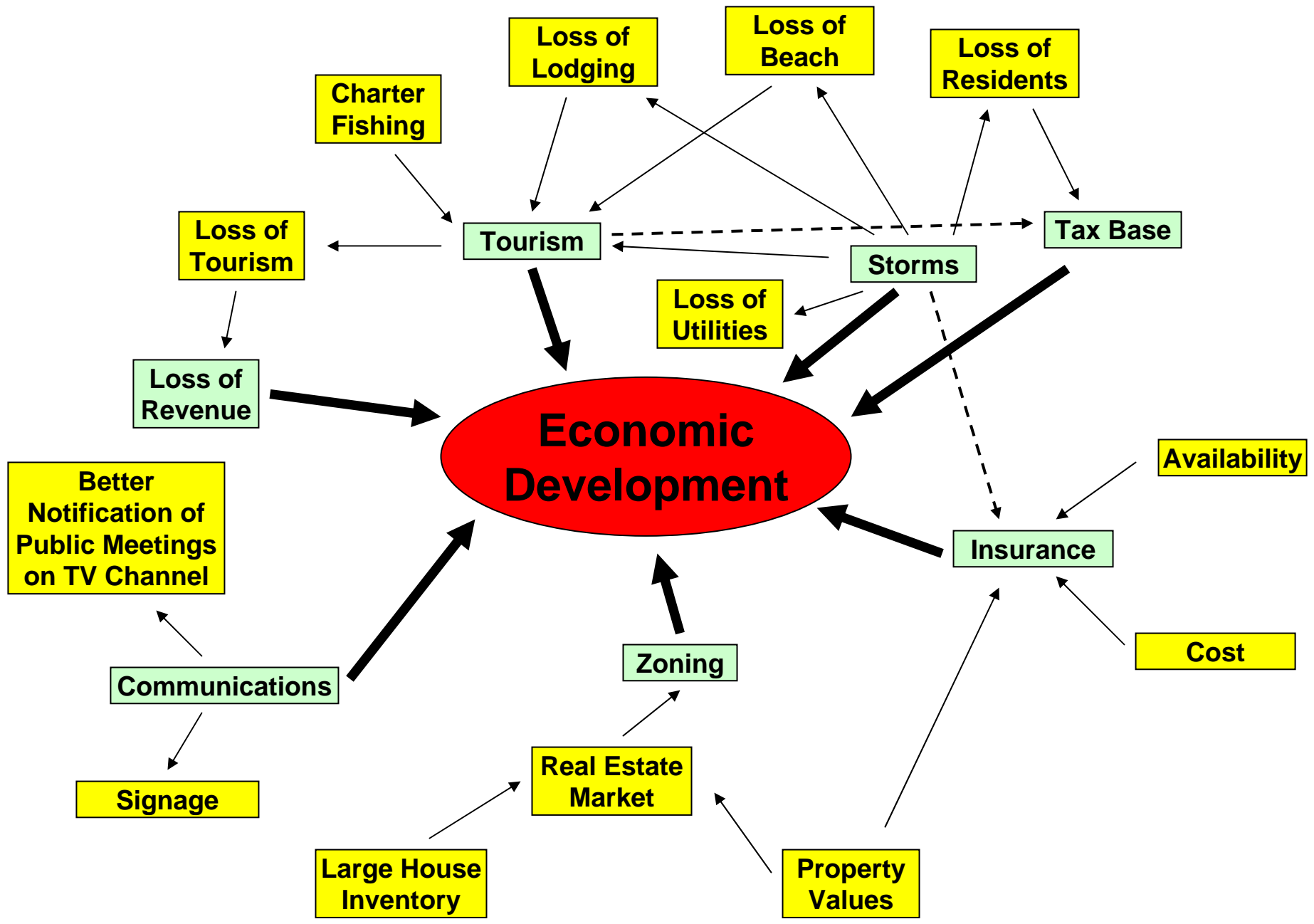
Figure 14

Planning Concern vs Home Location on Island









Shared Community Vision for Dauphin Island

On behalf of the people of Dauphin Island, the Town will lead this small island community through the 21st century by preserving the island's history, culture, and environmental assets, while planning for a future that capitalizes on its natural resources to promote economic well-being.



This Shared Community Vision is Supported by the Following Elements.....

Community

- *citizens that are active environmental stewards (3)*
- *community-wide communication services (7)*
- *affordable housing for its workforce (2)*
- *access to necessary health and other vital services*

Environment

- *conservation and restoration of the island's beaches, shore, and other important habitats (18)*
- *adaptive management of beaches and erosion mitigation by encouraging natural processes while tracking most up to date advancement of maintenance technologies (18)*
- *construction & land use activities that represent low impact development (4)*
- *management of healthy natural ecosystems, locally and regionally, to protect the services they provide (29)*

Culture

- *diversity of people made up of permanent residents, part-year and seasonal residents, as well as week-long visitors, weekenders, and day-trippers (2)*
- *local history museums that communicate historical cultures of the island*
- *promotion of local and regional art and artists*



This Shared Community Vision is Supported by the Following Elements..... (continued)

Governance

- *unified and effective (43)*
- *transparent government operations*
- *recognition of all special interests and responsive to citizen concerns*
- *encouragement of active public involvement in the Town's governance*
- *maintenance of diverse revenue generating activities to support services (8)*
- *responsible planning for a sustainable future (13)*
- *fair and equitable conflict resolution*

Economics

- *a small, central downtown village with waterfront activities and retail (23)*
- *a working waterfront*
- *incentives to support small business*
- *a small-town feel with balance of retail and basic services that support tourism and address permanent resident needs (12)*
- *efficient, effective and appropriate public transport (3)*

Tourism

- *appropriate recreational uses of beaches*
- *public access to resources*
- *nature-based, economically vibrant, and responsible tourism activities (17)*
- *diversified tourist services*
- *visitors that are active environmental stewards*